

PLASTIC NURSERY CONTAINERS

WHITERIDGE BLOW MOLDED CONTAINERS

Available in a wide selection of sizes, these containers are an economical alternative to the heavy-duty injection-molded containers. Strong grip handles are molded into the rims of the larger sizes, easing the handling of large trees and shrubs during shipping. With strong engineered corners and a wide base, these containers are designed to remain stable and upright, whether used in production or at the retail nursery centre.



Container	Trade Size	Diameter (OD)*	Height	Stock #
Whiteridge BM 3	3	11"	9½"	
Whiteridge BM 5	5	11"	12"	
Whiteridge BM 7 Squat	5	13¾"	9"	CT50620
Whiteridge BM 7	7	13¾"	12"	
Whiteridge BM 10 Squat	10	17¾"	11¼"	
Whiteridge BM 15	15	17¾"	16¾"	
Whiteridge BM 20 Squat	20	23¾"	14"	
Whiteridge BM 25	25	23¾"	17"	CT50715
Whiteridge BM 45	45	30"	18"	CT50716

ELITE® BLOW MOLDED CONTAINERS

Perfect for your small shrubs, perennials and tropicals, these containers are designed with ribbed sides for a tough, lightweight alternative to heavy-duty injection-molded containers. Strong pot rims make for easy "de-nesting" for handling in either manual or automated potting systems. Handles are incorporated into the rims of the 1600 and 2000 size pots.



Container	Trade Size	Diameter (OD)	Height	Stock #
Elite 300	#1	6½"	7"	CT50140
Elite 600	#2	8½"	8½"	CT50160
Elite 1000	10"	9"	9"	CT50180
Elite 1200	#3	9⅝"	9⅝"	CT50185
Elite 1600	#4	12"	10⅝"	
Elite 1600 Squat	#4S	12"	7¾"	
Elite 2000	#5	12"	11"	CT50200

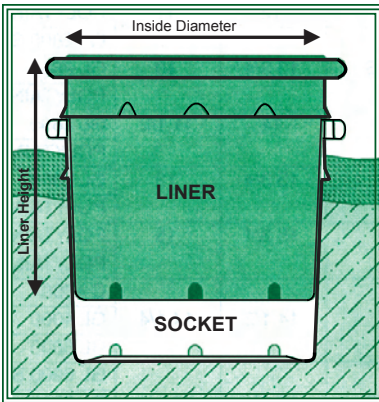
Listo™ INJECTION MOLDED

Made from durable, high-strength resin, *Listo*™ Nursery Containers are designed and manufactured to meet and surpass the rigorous demands of the nursery industry.

Container	Outside Width	Inside Width	Stock #
Scotch Pot (= 6" AZ)	6⅝"	6"	CT51100
1	6½"	6"	CT51110
2	8¾"	8"	CT51120
3	11⅝"	10½"	CT51150
5	12"	10½"	CT51130
5 TUB	13"	12"	CT51135
7	16¼"	15"	CT51140
15	16½"	15"	CT51160



POT IN POT SYSTEM



The **Pot-in-Pot container growing system** is an excellent alternative to growing trees and shrubs in field plots or above-ground containers. As shown in the diagram (left), one pot is placed in the ground to provide a base for another pot in which the plant is grown. There are many advantages to this type of growing system:

- It enables the production of easily marketable, caliper-sized trees and can eliminate the difficulties with winter kill.
- Integrated Pest Management (IPM) programs are much more easily implemented and managed.
- A major advantage is accelerated growth. Because they can be more highly managed, production time can be cut almost in half.
- Ease of handling with much less shock and root disturbance.
- Harvesting trees is as simple as removing a pot from the field.
- Trees can be transplanted from spring through fall.
- Both pots and holes in the field are recyclable, so labour and capital outputs are required only in the initial field set-up.
- It's an excellent means of displaying and merchandising shade trees and larger shrubs.
- It's an environmentally sound method of production, conserving soil and keeping an area productive for a long time.
- Less need for heavy equipment compacting nursery fields.

SPECIAL CONSIDERATIONS:

Management: In general, manage the Pot-in-Pot system as a two-year production cycle.

Growing Media: Studies of Pot-in-Pot systems have shown that more porous growing media generally results in better performance. Media mixes of 100% soil did not produce

as much growth as mixes comprised of bark, peat and sand.

Drainage: Drainage under the pot is an important factor in the success of a Pot-in-Pot system. This is one reason why the system can be set up on poorer soils or rougher terrain such as gravel or stoney areas. Sandy soils are more suited than clay soils for in-ground container systems. Methods for improving drainage involve a band of coarse gravel in a trench under the pots, or better yet, installing 2" or 3" weeping tile in a band under each row.

Trade Size	Liner (Inside Pot)	Inside Diameter	Liner Height	Socket (Outside Pot)
#5	EG/GL-2000	10¾"	11"	GL-2000
5 Squat	EG/GL-2800S	13¾"	10"	GL-2800S
#7	EG/GL-2800	13¾"	12"	GL-2800
#10	EG/GL-4000	14½"	14½"	GL-4000
#10 Squat	EG/GL-6900S	17¼"	12¼"	GL-6900S
#15	EG/GI-6900	17¼"	15¼"	GL-6900
#20	EG/GL-8000	19¼"	17"	GL-8000
#25	EG/GL-10,000	22¾"	18¼"	GL-10,000

GRIP-LIP®

Nursery Supplies' Grip-Lip® Containers provide maximum stacking and shipping strength. Maneuvering plants and trees is easier as the lip doubles as a rigid handle. This unique design makes the Grip-Lip® comfortable to lift, yet strong enough to be carried by forklift. In addition to the standard weight containers, the Econo-Grip™ is has the same great features, at an economy weight.

Grip-Lip® Container	Trade size	Gallons	Litres	inside Diameter	Height	Stock Number
GL-2000	#5	3.9	14.9	10¾"	11"	CT50210
GL-2800	#7	6.5	24.6	13¾"	12"	CT50225
GL-2800S	#5 Squat	5.6	21.1	13¾"	10"	CT50220
GL-4000	#10	9.0	34.1	14½"	14½"	CT50235
GL-6900	#15	13.2	50.0	17¼"	15¼"	CT50255
GL-6900S	#10 Squat	10.8	40.9	17¼"	12¼"	CT50240
GL-8000	#20	19.6	74.2	19¼"	17"	CT50260
GL-10000	#25	27.6	104.5	22¾"	18¼"	CT50270
GL-10000S	#20 Squat	20.5	77.7	22¾"	13¼"	CT50275



MOLDED NURSERY CONTAINERS . . .



WESTERN

The versatility of Pulp Molded Nursery Containers is unrivaled: made of recyclable paper pulp, yet decorative; durable yet fully bio-degradable; lightweight but strong; an insulator in winter, yet will cool plant roots in summer. And the variety of sizes and styles ensures there is a pot for every plant and every person!

Molded Pulp Pots can be used for production in the greenhouse or nursery. As they are completely bio-degradable, they can be planted *with the perennial, shrub or tree*, reducing the occurrence of transplant shock.

Protect the plants . . . Protect the soil . . .
Protect the environment!!!

Pulp Pot Planting Tips

The following procedures are generally accepted by the industry; however, these methods are presented as a guideline only.

1. After working the soil, dig a planting hole at least twice as deep and wide as the container to be planted.
2. Pack backfill soil under the container to raise it a few inches above the surrounding soil.

Recent studies have shown it is better to use the soil dug from the hole to backfill rather than alternate, amended soil. Amended soil will result in quick growing, but weaker roots. Roots will also be impeded when they reach the "barrier" of solid, harder outer soil.

3. Never plant deeper than the original soil line in the container.
4. Coat the inside of the hole with a root stimulator, such as *Wurzel Dip* or similar growth promoter.
5. Slit the sides of the container in several places to permit root development.
6. Remove the bottom of the container completely.
7. Tear off the rim so that the pot does not appear above the soil.
8. Fill in around the root ball, tamping with your foot, so there is good contact between the pot and soil.
9. Use the extra soil to build a "well" around the plant to use as a catch basin for water. **DO NOT PUT SOIL AGAINST THE PLANT!** The well, or catch basin, should be at least 6" away from perennials and very small shrubs, 12" away for larger shrubs and small caliper trees, and 18" for large caliper trees.
10. Water thoroughly, using a solution of root starter fertilizer (with a high phosphate content) and root promoter (e.g., *Tune-Up 10-40-15* and *Wurzel Dip*). Completely fill the basin around the tree 2-3 times to insure proper solution penetration.

Water often (not constantly) until the plant is established. This is particularly important for trees! Frequent waterings may be needed for the first two years until enough feeder roots have developed for the tree to be able to take up sufficient water on its own.

Trees and Shrubs in full leaf and all evergreens require an extra step to ensure transplant shock is kept to a minimum. Spray with an anti-desiccant (e.g., *Foli-Gard*) to minimize moisture loss due to transpiration. In the fall, spray evergreens with the anti-desiccant to prevent winter damage.

Container Size*	Trade Size	Stock Number
Decapot		
10" x 6" Mini		CT45127
15" X 8"		CT45240
Round		
6" X 6"	1 gal	CT45320
7" X 7"	1 gal	CT45330
7" X 9"	1.23 gal	CT45340
8" X 6"	1 gal	CT45105
8" X 8"	2 gal	CT45350
10" X 4"		CT45125
10" X 7"	1 gal	CT45130
10" X 10"	3 gal	CT45110
10" X 14"	4 gal	CT45120
12" X 5"		CT45160
12" X 8"	2.75 gal	CT45170
12" X 11"	4 gal	CT45140
12" X 16"	5.5 gal	CT45150
13" X 9"	4 gal	CT45190
13" X 12"	5 gal	CT45180
15" X 6"		CT45230
15" X 10"	5.5 gal	CT45210
15" X 13"	8 gal	CT45200
15" X 16"	9 gal	CT45220
18" X 8"		CT45245
18" X 12"	9 gal	CT45247
18" X 15" (3R1815)	10 gal	CT45248
18" X 16"	12 gal	CT45250
21" X 8"	5.5 gal	CT45255
21" X 12"	11 gal	CT45260
21" X 16"	14 gal	CT45270
24" X 18"	22 gal	CT45290
30" X 22"	40 gal	CT45300
36" X 22"	65 gal	CT45310
Square		
9½" X 9"		CT45360
11" X 11"		CT45135
Window Box		
15" Mini	1.29	CT45275
24" X 10" X 5"	2.98	CT45280
* Round & Decapot shown width X height		
* Square shown width X length		
* Window Boxes shown length X width X height		

DECORATIVE • ECONOMICAL • ENVIRONMENTALLY FRIENDLY

Small

NURSERY CONTAINERS

Bareroot roses, shrubs and smaller trees thrive in these containers. So easy to plant pot 'n all, without transplant shock! Packaged in plastic sleeves. Available in bulk.



Extra Deep Nursery Pots are excellent for deep rooted plants, especially fruit, nut and citrus trees. Smaller diameters give maximum use of space.



6X6RD
44 ea./case
2.48 qt/2.35 l
CT45320

7X7RD
44 ea./case
1.03 gal/3.90 l
CT45330

7X9RD
40 ea./case
1.28 gal/4.87 l
CT45340

8X6RD
68 ea./case
1.04 gal/3.94 l
CT45105

8X8RD
40 ea./case
1.62 gal/6.14 l
CT45350



9X9RD
40 ea./case
1.80 gal/6.83 l

9X9SQ
50 ea./case
1.99 gal/7.55 l
CT45360

10X7RD
40 ea./case
1.80 gal/6.84 l

10X10RD
36 ea./case
2.55 gal/9.68 l

11X11SQ
36 ea./case
3.77 gal/14.3 l
CT45135



EXTRA DEEP

10X14RD
22 ea./case
3.54 gal/13.4 l
CT45120

12X16RD
26 ea./case
5.73 gal/21.7 l
CT45150



12X8RD
40 ea./case
2.74 gal/10.4 l
CT45170



12X11RD
32 ea./case
3.40 gal/12.9 l
CT45140



13X9RD
36 ea./case
4.12 gal/15.6 l
CT45190



13X12RD
28 ea./case
5.52 gal/20.9 l
CT45180

Medium

NURSERY CONTAINERS

Medium evergreen shrubs, shade trees and conifers, plus specimen trees and B&B stock, too. Ideal for balcony and deck plantings. Packaged in plastic sleeves. Available in bulk.



15X10RD
20 ea./case
4.28 gal/16.2 l
CT45210



15X13RD
16 ea./case
6.55 gal/24.8 l
CT45200



15X16RD
14 ea./case
7.97 gal/30.2 l
CT45220

Large NURSERY CONTAINERS

Wax-permeated at the rim and bottom, these large containers are great for B&B stock and specimen trees. Ideal for living Christmas trees, large shrubs, conifers, shade trees and container gardening. Packaged in plastic sleeves. Also available in bulk.



18X12RD
12 ea./case
9.90 gal/37.5 l
CT45247



18X16RD
10 ea./case
12.15 gal/46.0 l
CT45250



21X12RD
10 ea./case
12.15 gal/46.0 l
CT45260



21X16RD
8 ea./case
16.11 gal/61.0 l
CT45270



Extra Large NURSERY CONTAINERS

Fully wax-permeated for long-lasting strength and durability, these containers make maintenance and display of large B&B stock and ornamentals easy. Designed to work with spade diggers. Ideal for large conifers, specimen, fruit and nut trees. Available only in bulk.



24X18RD
Bulk only.
23.38 gal/88.5 l
CT45290



30X22RD
Bulk only.
45.04 gal/170.5 l
CT45310



36X22RD
Bulk only.
70.67 gal/267.5 l
CT45310



Hanging Baskets

NURSERY CONTAINERS

Hanging Baskets are wonderful for traditional plantings such as fuchsias, geraniums, begonias and impatiens. Also wow your customers with non-traditional plantings, unique flowers and foliage. Easy to hang with extra-strong nylon hangers (sold separately).



The 10 and 12 baskets can be ordered with extra-strong nylon hangers which snap easily into place. Hangers sold separately.

Sizes 10 through 14 are wax-permeated and feature no-rust brass eyelets. All hangers sold separately.



10SQ Basket
22 ea./case
1.84 gal/6.98 l
CT45415



12SQ Basket
22 ea./case
2.80 gal/10.6 l
CT45421



10RD Basket
22 ea./case
1.34 gal/5.10 l
CT45410



12RD Basket
22 ea./case
2.09 gal/7.93 l
CT45420



10 Cascade Basket
22 ea./case
1.37 gal/5.20 l
CT45510



12 Cascade Basket
22 ea./case
2.34 gal/8.87 l
CT45520



10XLRD Basket
22 ea./case
1.59 gal/6.05 l



12XLRD-II Basket
22 ea./case
2.69 gal/10.2 l



14XLRD Basket
20 ea./case
3.96 gal/15.0 l
CT45422



16X8 Garden Basket
20 ea./case
4.43 gal/16.8 l
Un-Waxed
CT45620



18X10 Garden Basket
20 ea./case
5.99 gal/22.7 l
Un-Waxed
CT45610

Patio Planters

NURSERY CONTAINERS

Decks, patios, window boxes, balconies— wherever your customers have little space but want lots of impact! For flowers and foliage, but also great for container gardening. Put these where customers can see them!



CT45160
12X5RD
50 ea./case
1.56 gal/5.94 l



CT45230
15X6RD
40 ea./case
2.98 gal/11.3 l



18X8RD
20 ea./case
5.65 gal/21.4 l
CT45245



21X8RD
16 ea./case
7.21 gal/27.3 l
CT45255



CT45127
10 Clover
36 ea./case
1.38 gal/5.24 l



12 Clover
20 ea./case
2.30 gal/8.70 l



14 Clover
20 ea./case
3.77 gal/14.3 l



Dec-A-Pot
22 ea./case
3.93 gal/14.9 l
CT45240



Mini-Window Box
40 ea./case
1.29 gal/4.90 l
CT45275



Window Box
24 ea./case
2.98 gal/11.3 l
CT45280

Garden Planters

NURSERY CONTAINERS

Premium Decorative Containers. Traditional Series have attractive sculptured sides and the Bell Series give the appearance of classic Italian Pottery. Fully wax-permeated.



10 Bell Series
16 ea./case
1.90 gal/7.2 l



12 Bell Series
16 ea./case
3.35 gal/12.7 l



14 Bell Series
16 ea./case
5.28 gal/20.0 l



16 Bell Series
16 ea./case
7.91 gal/29.9 l



10 Traditional Series
16 ea./case
2.13 gal/8.07 l



12 Traditional Series
16 ea./case
3.30 gal/12.5 l



14 Traditional Series
16 ea./case
5.20 gal/19.7 l

Container	Size	Gallons	Stock Number
1/2 Peck	8½" x 6½"	1.25	CT52170
1 Peck	11" x 7"	2.5	CT52150
1/2 Bushel	14" x 9"	5	CT52160
1/2 Bushel Frobisher	14" x 12"	6	CT52161
1 Bushel	18" x 11½"	10	CT52140
Basket (4 Quart)	6" x 14" x 5"		CT52190
Basket (7 Litre)	7" x 16" x 5"		CT52191

WOODEN NURSERY CONTAINERS

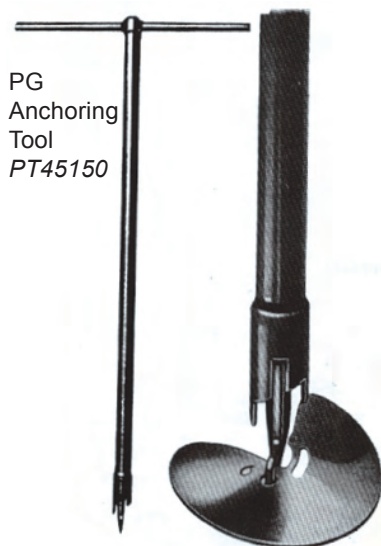
Wooden Nursery Containers . . . an environmentally friendly way to produce and plant nursery crops. Wooden containers have several special characteristics:

- Will not rust or dent.
- The wood slats allow proper drainage and roots can "breathe". Thus roots stay warmer in winter, and cooler in the summer.
- Wooden containers do not have to be removed for final planting. So transplant shock is virtually eliminated, and it's easier to plant.
- Totally bio-degradable and non-polluting – it decays to enhance the soil and provide nutrients to the plant.
- And a bonus: Wooden Containers have a warm, natural look and feel, providing that extra "curb" appeal for sales!



ANCHORS

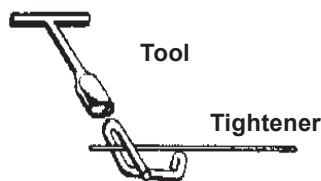
For securing tree guy wires, the *PG Tightener Tool* and *Anchors* are faster and more functional. The *Anchor Disk* is twisted into the ground and creates a solid anchor which will hold for a long time.



4" Anchor – PT45140

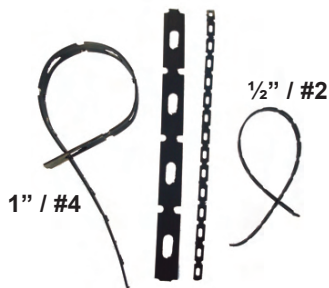
TREE TIGHTENERS

Ideal for tightening tree guy wires.



Tighteners PT45200
Tightener Tool PT45210

PLASTIC CHAINLOCK



#2 / 1" PT45255
#4 / ½" PT45245

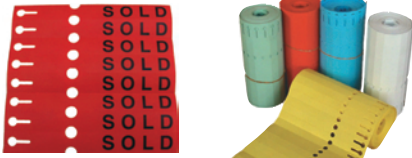
TRUCK TARPS



These Truck Tarps are fabricated to your size specifications with two rows of grommets. The second row of grommets is added two feet from the edge of the tarp for flexibility. We recommend truck tarps be made from 85% Green Lathe for extra durability and prolonged tarp life.



Aluminum Tree Labels w/wire (2 X 10 cm = 0.75" X 4")	PT53210
---	---------



Self-Locking Nursery Labels

Size	Colour	Stock Number
6.25"	Blue	PT53133
6.25"	Green	PT53131
6.25"	Red	PT53134
6.25"	White	PT53130
6.25"	Yellow	PT53135
8"	Blue	PT53143
8"	Green	PT53141
8"	Red	PT53144
8"	White	PT53140
8"	Yellow	PT53142
8.75"	Red SOLD	PT53149



Marking Pens	
Black INDUSTRIAL UV	PT50132
Red	PT50140



Plastic Plant Labels (5")

Colour	Stock Number
Blue	PT53123
Green	PT53121
Orange	PT53125
Pink	PT53120
Red	PT53124
White	PT53150
Yellow	PT53122



(Left to Right) Style "J" Nursery Stake, Galvanized Nursery Stake, 10" Wood Stake, Style "K" Nursery Stake.

Wood Stake 10" (500/pkg)	PT53180
------------------------------------	---------

Nursery Stakes		
Style J	3" X 12"	PT53170
Style K	4.5" X 18"	PT53160

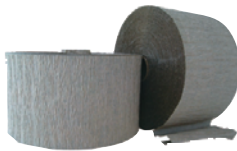
Galvanized Stake 24"; holds 3 3/4" X 5 1/2"	PT53300
---	---------



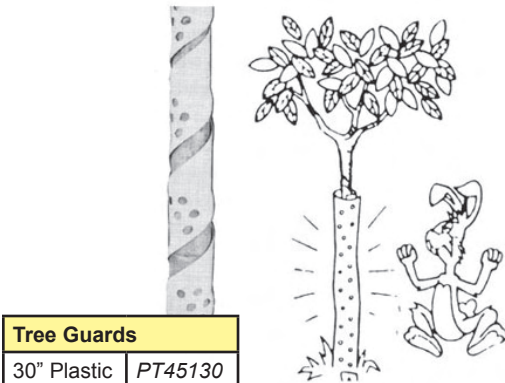
Tree Calipers	
Aluminum	PT45160
Plastic	PT45170

Tree Tagging Tape	
Blue	PT50194
Green	PT50191
Lime	PT50196
Orange	PT50190
Pink	PT50193
Red	PT50195
Yellow	PT50192

Tree Wrap	
4" X 150' (Paper)	PT50200



Turf Marking Paint	
Green	GS61127
Florescent Green	GS61113
Black	GS61105
White	GS61111
Caution Blue	GS61107
Florescent Pink	GS61110
Orange	GS61112
Florescent Orange	GS61114
Red	GS61106
Yellow	GS61108



Tree Guards	
30" Plastic	PT45130

**TREECOVER™
WATER SAVERS**

15 Gallon, 8-hr Release
PT 50301





SWISS QUALITY SECATEURS

Selecting the right set of secateurs is important as nothing affects the growth and yield of a plant more than pruning. Cutting cleanly without crushing the stem or bark of a plant or tree is essential to keep out disease. **FELCO® Pruners** are designed to meet and exceed the demands of the industry, in mechanisms, strengths, longevity and comfort. The original F-2 Pruner was designed over 40 years ago, and remains the mainstay of the industry. Solid-forged metal alloy handles – molded to fit the hand and fingers – complement the Swiss precision-made hardened cutting blade and anvil (with a sap groove to keep the anvil and blade from sticking together). A rubber cushion and shock absorber provide smooth working and soft closing, making the pruners very easy and comfortable to use. All parts are replaceable for easy maintenance.



Felco 2
The Original.
Riveted Anvil Blade; appreciated for its strength. *PT10130*



Felco 5
A basic model, with steel handles, for occasional use or garden maintenance. *PT10135*



Felco 6
For small hands. Light & compact with a tapered cutting head. *PT10145*



Felco 9 — Left-Handed Pruners.
Angled cutting head, which is offset to extend the forearm to provide optimum efficiency. *PT10150*



Felco 7
High performance with a revolving handle. Recommended for prolonged pruning. Felco 7 (*PT10140*) is for Right Hands; Felco 10 (*PT10120*) for Left Hands.



Felco 70 FELCOmatic Pruners
These pneumatic pruners ease the task of intensive pruning and pruning of extremely hard woods. Operated by a compressor, a dual piston increases the cutting power, allowing the Felco 70 to cut up to 1.2" diameters. The cutting head can be rotated 360°. Can be ordered with 2', 4' & 5' extensions. *PT12110*



Replacement Parts Available



Felco Replacement Parts Available

Belt Holster for Hand Shears

Top grain tanned cowhide leather holster is top stitched with heavy thread and rivet for durability. The slotted end makes for easy attachment to a belt. *PT10110*



SWIVEL 150 SAW



An extremely versatile tool. The 14" blade is on a swivel and can be made to cut at different angles. Can cut up to a 4" green-wood branch. Extra blades available.

- #150 Saw (14") *PT25120*
- #150 Blade *PT25130*
- #150 Blade Holder Kit *PT25140*

HEDGE SHEARS



The model 5460 has compound action and 9½" alloyed steel blades, with a serrated top cutting blade, for easier cutting. A deep pruning notch can cut up to ½" diameter limbs. The adjustable tension lets you use the same tool for light or heavy cutting.

PT16110

COMPOUND BY-PASS LOPPER



The **Roughneck Compound By-Pass Action Lopper** increases cutting force with less effort. Lightweight, durable, drop forged high carbon steel for strength. *PT16120*

ROSE PRUNERS



The professional cut and hold pruner for rose growers and gardeners. Rust resistant non-stick coating. *PT16130*

LOPPERS



Heavy Duty Loppers w/ StrataShear³ Blade

Available in 26" & 32"
Lightweight, high strength, forged steel blades.
26" – PT15115
32" – PT15120



Professional Super Duty Bypass Lopper

Available in 37"
Heavy-duty spring-loaded Shock Stop bumper.
PT15200



Heavy Duty Professional Bypass Lopper

Available in 26" & 36"
Precision made, self-aligning pivot bolt.
26" – PT15170
32" – PT15190

SAWS

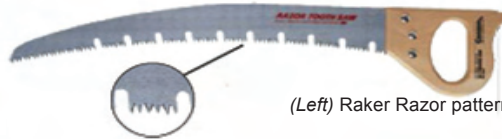


(Above)

13" Pruning Razor Tooth Saw

For medium to large branches. Has 3-sided razor teeth and replaceable blade. Precision milled pistol grip with finger hook.

w/Plastic Handle PT25204
w/Wooden Handle PT25205



(Left) Raker Razor pattern

(Above) **Raker Razor Tooth Saw**

21" long for large branches and limbs. Has 3-sided razor teeth and self-cleaning Raker pattern.



(Above)

8" Folding Pruning Razor Tooth Saw

For small to medium branches. Has 3-sided razor teeth and replaceable blade. Cushioned pistol grip handle.
PT25126



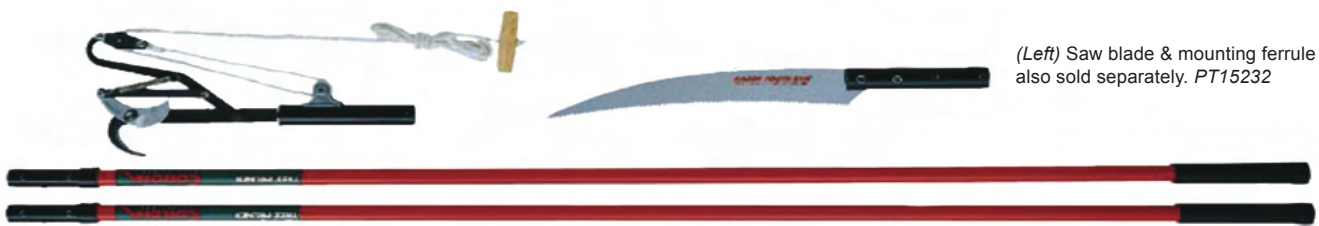
(Above)

10½" Folding Razor Tooth Saw

For medium to large branches. Has 3-sided razor teeth and replaceable steel allow folding blade.

PT25125

TREE PRUNERS



(Left) Saw blade & mounting ferrule also sold separately. PT15232

(Above) **12 Ft. Arborist Tree Pruning System** comes with compound action dual pulley system, which triples your cutting power. Forged steel Radial Arc blade and (2) six foot high-strength fiberglass poles to use together or separately. PT15219



(Above) **12 Ft. & 14 Ft. Compound Action Tree Pruner** telescopes from 7' to 14'. Has a Powerglide® rope pull system and heavy duty chain drive, high strength zinc allow pruning head with Teflon coating and 13" Razor Tooth saw blade. Comfortable 28" foam grip at pole base.

12 Ft. – PT15220

14 Ft. – PT15221

NURSERY FERTILIZERS



Apex granular formulas are 90 to 180 day controlled release fertilizers and have micronutrients included. Available in 50 lb. bags.

14-14-14 Bloom (3-4 mos.)	FR36034
21-5-6 (3-4 mos.)	FR36036
22-6-10 (6-7 mos.)	FR36037



Tune-Up Water Soluble Fertilizers have been scientifically

formulated to include the proper ratios of nitrate vs. ammonium nitrogen and the proper mixture of trace elements for optimal plant nutrition.

10-52-10 Starter Transplant Formula, 17.5 Kg/38.5 lb. bag	FR10120
28-14-14 Maintenance Formula, 17.5 Kg/38.5 lb. bag	FR10230

PLANTING TABLETS

Perfect for:

- Seedlings • Plugs •
- Container Stock •
- New Tree Plantings •
- Trees, Shrubs, Roses •

These tablets are a complete plant food, supplying the full range of major, minor and micronutrients to meet the continuing needs of all plants. They simplify the process of fertilization, slowly releasing nutrients for up to 2 years. Formulated as 20-10-5.

5 gram	2100/case	FR65160
10 gram	1000/case	FR65140
21 gram	500/case	FR65150



Young roots seek out the nutrients provided in the tablets.



PERFECT -A- FEED



5 Quart Dispenser

Designed to apply a specific amount of granulated fertilizer in a specific location, the Perfect-A-Feed dispenser is the perfect tool to fertilize trees and other nursery stock. Each turn of the handle releases the appropriate amount of granulated fertilizer, insecticide

- Pre-Calibrated
- Precise Application
- Labour Saver

or herbicide to each plant. This precision application means less material is wasted.

It's lightweight and compact design, with adjustable shoulder straps and far-reaching application tube, mean less stress on the operator (no bending or stooping). Applications are done quickly and efficiently.

With less material wasted, and less time needed for application, the Perfect-A-Feed provides extra savings to the grower, while helping increase crop quality.

A 20 lb. Backpack Applicator is Available.

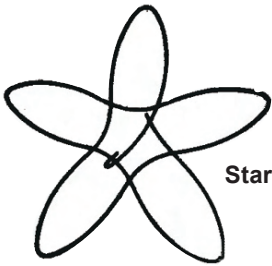
TREE BASKETS



25° Cone Open Bottom Basket



25° Closed Bottom Basket



Star Basket



Tree Basket Size	Burlap Liner Size (Treated)	
	Regular	Oversize
24"	40" X 40"	40" X 45"
28"	40" X 40"	40" X 45"
32"	48" X 48"	50" X 54"
36"	54" X 54"	54" X 60"
40"	54" X 60"	60" X 60"
44"	60" X 60"	72" X 72"
50"	72" X 72"	85" X 90"
54"	72" X 72"	85" X 90"
60"	96" X 96"	108" X 108"
72"	120" X 120"	

Wurzel Dip

Use *Wurzel Dip* to eliminate transplant shock and induce the growth of new feeder roots. These small root hairs gather larger quantities of nutrients and water,

resulting in stronger growth. *Wurzel Dip* can be used in greenhouse, nursery and landscape operations, at a ratio of 1:100.



4L CH41150
20L CH41160



Proven effective against plant damage due to winter kill, transplant shock, air pollution, wind burn and drought. It is made from a unique water-based hydrophilic polymer. Has a built-in UV filter, non-toxic and not injurious to plants. A perfect anti-desiccant for summer and winter conditions for trees, shrubs and ornamentals.



4 Litre CH41130
20 Litre CH41120



Hog Ring Pliers & Staples

BURLAP LINERS

(Right) Tree Basket with Plain Burlap Liner
(Below Right) Treated Burlap Liner



3/4" Polycord Strapping CT52130



Bulk Burlap CT61120

Row Covers



agribon+™

AG-19
Light Weight Protection
2°C Frost Protection – 0.55 oz/yd²

AG-30
Medium Weight Protection
4°C Frost Protection – 0.9 oz/yd²

AG-50
Heavy Weight Protection
1.5 oz/yd² Overwintering

AG-70
Extra Heavy Weight
2.0 oz/yd² Overwintering

Rugged, lightweight material designed to keep plants warm on cool nights, and protect crops against insects. Easy to handle, it will not rot and admits light, air and water.

Ag-19, AG-30 and AG-70 are stock sizes. Other roll sizes can be booked early in the season.

GROUND COVERS

Woven polypropylene geotextiles for use in greenhouses, nurseries and landscaping



(Above) **Ground Covers** for nurseries are ideal for using as weed block in fields and retail areas. These covers have green lines on the fabric at 12" intervals, to help nurseries display container stock. Greenhouses find them ideal on floors for controlling weeds and mud.

6' X 300'	GH26305
12' X 300'	GH26310
15' X 300'	GH26315

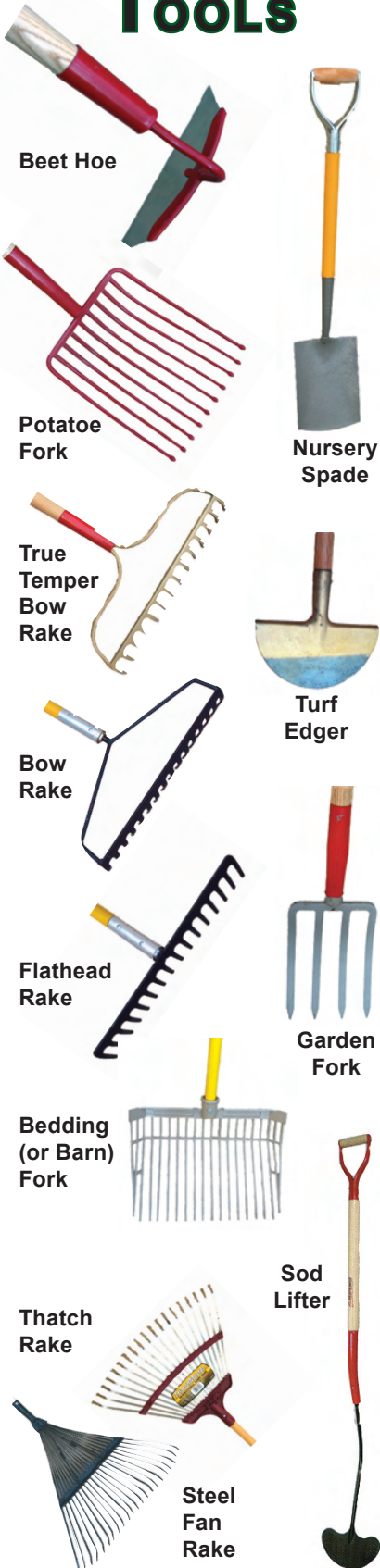


(Below) Essential for keeping weeds at bay, the **Weed Barrier** is backed by a dense woven felt. This allows water and nutrients to the plant roots while keeping sunlight away from weed seeds, preventing germination. It also prevents perennial weeds from growing through, effectively killing them.

6' X 250'	RR75240
12' X 250'	RR75245



LANDSCAPE TOOLS



EDGEPRO

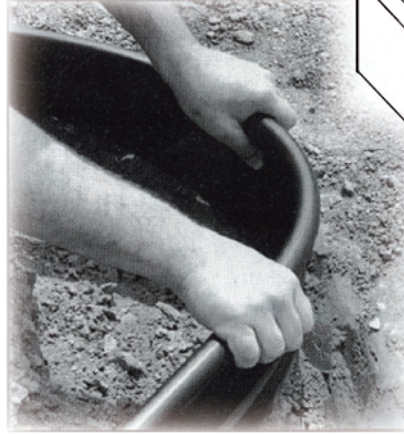
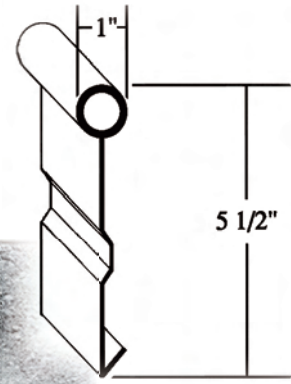
Designed for strength, durability and easy installation, this professional lawn edging meets all of the requirements of landscapers and homeowners.

Its extra heavy top beading can withstand the abuse of yard equipment and is made of a polyethylene treated for UV protection.

The side rib enhances the flexibility of the edging, allowing for complex designs.

The large bottom fin helps prevent frost-heave, ensuring the edging stays put and does not have to be adjusted from season to season.

Each length of black edging is 5" wide and 20' long, and comes with (3) metal stakes and (1) connector. Extra stakes are available. RR76111



(Above) On a properly prepared base, the interlocking grassroad pavers are rolled out and linked together.

(Right Middle) A composite concrete sand fills the paver rings and provides proper drainage.
 (Right Bottom) Sod is laid over the pavers, then rolled to eliminate air pockets and insure good root contact with the sand base.



GRASS PAVERS

Function and Beauty . . . all in one package! Grassroad Pavers add the structure and stability needed for high traffic areas, while allowing for the growth

of a beautiful grass area. Used for firelanes around buildings, public spaces and even parking, these pavers can support the heaviest of traffic and even a fully loaded, extended fire department ladder truck.



A division of **BRINLY-HARDY CO.**

- Positive On/Off System (no cables)
- Pneumatic Tires
- Powder Coated or Steel Frames
- P20 Series has adjustable handles
- Pro Series has Dual Handles & Accu-way Even Spread Pattern Adjustment

ACCESSORIES



(Right)
Hopper Cover



(Left)
Side Deflector



(Right)
Hopper Cover

P20-SERIES SPREADERS

P20-500BH (P64)
EQ60226
50 lb / 23 Kg
Hopper
Cover
Available



P20-5010 (#46-22)
EQ60220
50 lb / 23 Kg Hopper
Incl. Screen & Cover



PRO SERIES SPREADERS

P60-8020 (#76-22)
EQ60215
80 lb / 36 Kg Hopper
Incl. Screen & Cover



S60-9020 (#96-22)
EQ60200
110 lb / 50 Kg Hopper
Incl. Screen
& Cover



S60-12020 (#288 Pro)
EQ60211
120 lb / 55Kg Hopper



GANDY DROP SPREADERS

Accurate, uniform applications of granular fertilizer, chemicals and seeds for the turf and nursery industry have been a strong feature of Gandy Precision



Spreaders for many years. Available in hand models or tractor pull-type. Depending on the model, optional features include pneumatic and semi-pneumatic rubber tires, hopper covers and jiggers to agitate materials. Stock sizes are 24", 36" and 42", with larger available upon request.

24' - EQ77112
36" - EQ77111

HERD SPREADERS

Herd Heavy duty broadcast spreaders are ideal for orchards, nurseries, forestry, small acreages and oilfield reclamation. Mounts to an ATV, golf course buggy or small tractor and its electric motor works off an ATV



or tractor battery.
EQ60500

TURF MASTER[®] BLANKETS

Professional

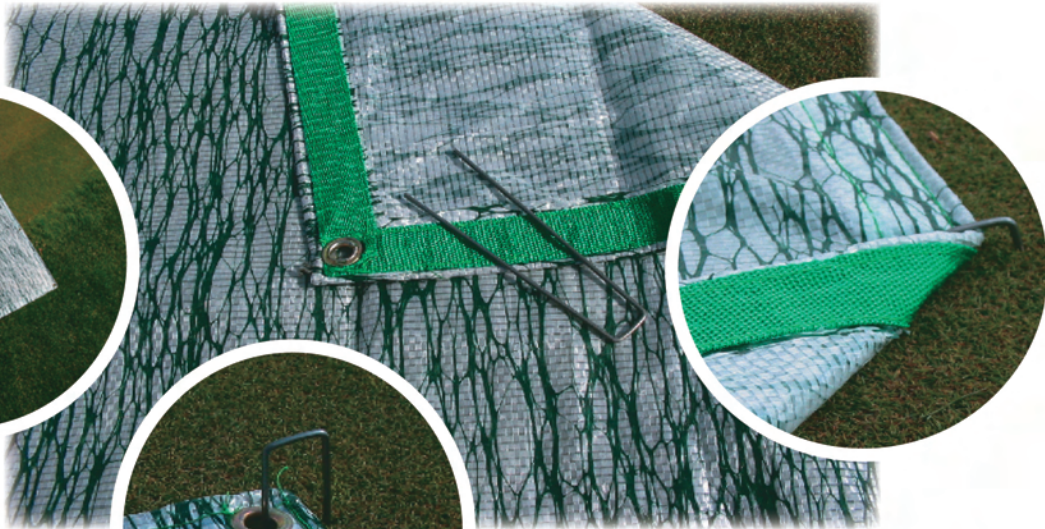
Get extra play time from your Golf Greens in the Spring with

Turf Master[®] Professional Turf Blankets!

Extra play time

= increased players' pleasure & satisfaction

= increased Revenue for your golf club!!



- A heavier blanket for durability and longevity.

- The green poly-extruded "web" design provides for a more even distribution of heat.

- The sides are grommeted every 18" for easy tie-down and durability.

- All edges are hemmed with a strong, durable webbed seam binding.

- Each blanket is packed separately in a reusable storage bag. The gusseted sides, make removal and re- packing much easier.

- 10 standard sizes to choose from:

RR75220 • 84' X 110' RR75229 • 48' X 60'

RR75230 • 72' X 90' RR75235 • 60' X 90'

RR75236 • 12' X 50' RR75237 • 24' X 50'

72' X 125' • 60' X 125' • 84' X 130' • 100' X 100'



Don't forget the Staples!!!

6" X 1" Steel Staples
1000 staples / case
RR75191

TURF FERTILIZERS

Understanding the nature and action of each type of fertilizer is the only way to properly manage a turf or nursery feeding program. Each category of fertilizer has its own merits.

The amount and source of available nitrogen, how often application is required and any additional nutrient factors included in the manufacturers formulations, all form the basis on which prices can be analyzed.

Basically fertilizer types can be split into three categories – chemical, organic and a combination of the two.

Chemical Fertilizer

Generally the lowest priced fertilizers, they supply only NPK and have little coating and thus the nutrients are readily available to the plants for quick green-up. However, plants can't use all the nutrients in a short time and thus a large portion of the fertilizer leaches away or becomes an insoluble salt.

Slow release chemical fertilizers make more sense. They have a

coating which allows the nutrients to be released over a period of time. Super Fairway 26-6-12 with 75% slow release N is a good example of a turf type and Apex 14-14-14 is a good example of a slow release fertilizer with trace elements added.

Organic Fertilizer

These are fertilizers generally derived from processed plant or animal waste. Nutrients are released by the action of micro-organisms on the fertilizer at a rate the plant can use. Thus there is no overloading with nitrogen so the plants grow steady and sturdy rather than tall and fast. As a result, the plants are less stressed, there's no chance of burning, no leaching and no salt build up. A good example of a pure organic fertilizer is Milorganite which is processed from activated sewage sludge. It is a natural slow release fertilizer, rich in organic iron and trace micronutrients. Milorganite conditions the soil, helps breakdown thatch and helps turf resist diseases.

Organic based fertilizers provide the best of organic and chemical fertilizers.

Nutrient availability is balanced between immediate and slow release for excellent green colour. The Turf Master organic-based fertilizers are a good example. They have proven to give outstanding results for landscapers, homeowners, and golf courses. For superior turf care, Turf Master has added the "Plus" factor.

Liquid Fertilizer

Custom applicators are common users of liquid fertilizers because they offer convenience of application, economical source of nutrients, and work excellent where quick green up is desired. In the liquid form the chemical fertilizer and nutrients are all readily available to the plant. Herbicides can be added to the mixes for weed control.

Generally requires more applications per season than dry fertilizers. More expensive equipment is needed for applications. As a cautionary it should be noted that extended use of liquid fertilizers has been known to discourage root development and cause thinning of grasses in lawns and acreages. If a liquid fertilizer comprises the main part of your program, we would recommend one application of organic fertilizer, either in spring or fall, to add some slow release fertilizer to the program.

What makes Turf Master "Plus" so vital to Turf Growth Development and Turf Management?

1. Turf Master "Plus" fertilizers are extremely useful in helping to prevent Black Layer in turf.
2. The addition of a variety of beneficial micro-organisms, which beef up naturally occurring organisms that aid in the breakdown and availability of plant nutrients.
3. Thatch is reduced as a result of the increased microbial populations and their balanced nutrition.
4. Leaching of valuable nutrients is reduced because of their slower release as a result of microbial activity. This also increases the efficiency of the fertilizer.
5. Anti-stress factors – including antioxidants, vitamins, enzymes and co-enzymes – are part of Turf Master "Plus". These help to regulate plant respiration, enhance the repair mechanism for physical wear and tear, optimize the biochemical reactions of the plant and optimize plant growth.
6. Silicon, a major component of cell walls, helps to provide improved drought resistance, disease control of molds and mildews, insect resistance and physical wear and tear resistance.
7. A balanced micronutrient package is added to provide proper micronutrient nutrition for both the turf and the soil micro-organisms.
8. Humic Acid is added to increase the CEC and to support the microbial population.
9. Kelp meal is added to provide a natural source of root promoting hormones, enzymes, vitamins and cytokinins.
10. The wetting compound will reduce dry or hydrophobic spots in the turf and can help eliminate fairy ring. It also provides more even water penetration and a more even distribution of nutrients.
11. The balanced formulation of all Turf Master "Plus" fertilizers is extremely beneficial to the environment.
12. Usage of Turf Master is not temperature dependent. The appropriate analysis required can be applied at any time of the year.

Organic Based Professional Turf Fertilizers



Turf Starter

10 - 20 - 4 Plus	Ideal for newly planted turf and sodding. Promotes root establishment for a healthy start.	FR60148
-------------------------	--	---------

Spring & Summer (May, June, July, to mid-Aug)

6 - 2 - 0	A classic natural organic fertilizer. Non-burning, rich in iron and resists leaching.	FR60170
6 - 2 - 0	Greens grade with smaller prill for turf like golf greens that are cut very low.	FR60175
10 - 4 - 4 Reg	Classic milorganite blend for trees, lawns and gardens.	FR60110
10 - 4 - 4 Plus	Basic organic slow release + micros for premium lawns.	FR60125
16 - 4 - 10 G-Plus	Greens grade, specific small prill milorganite for golf greens.	FR60138
16 - 4 - 10 Plus	Classic milorganite base plus micros for greens, fairways and acreages.	FR60137
18 - 1 - 15 Plus	Organic slow release for spring and fall for fast green-up plus extra potash.	FR60145
20 - 4 - 10	Fairway special with the classic Milorganite base	
24 - 2 - 12 Reg	Economical blend for fairways, condos, acreages, and home lawns	FR60147
24 - 2 - 12 Plus	Formulated for golf courses and turf managers wanting premium results.	FR60146

Fall/Winterizer (Late Aug and Sept)

4 - 4 - 14	Winterizer with high potash content which builds cell wall strength for winter hardiness.	FR60140
7 - 2 - 28 Plus	Winterizer with extra potash for economical applications. "Plus" package provides micronutrients for healthy turf going into winter.	FR60149

"Plus" Factors in Turf Master Fertilizers

Silicone wetting compound to increase water efficiency
 Micronutrients : Sulphur, Magnesium, Iron, Copper, Manganese, Zinc, Molybdenum, Boron

See Appendix page 87 for application rates

All Turf Master Fertilizers are sold in 25 kg / 55 lb. bags

Special Products for Turf Care

Specialized “Environmentally Friendly” Turf Care

Interceptor	Special Turf Master fertilizers with organic-based plant nutrients to <i>stimulate natural microbial action</i> within the soil. Designed for golf course tees and greens, the natural microbes work to guard against fungal diseases. Less disease means fewer chemicals applied, helping assist turf managers to become more environmentally conscious.	25 kg	
	Summer formulas: 19 - 3 - 10 12 - 4 - 8		FR60126 FR60128
	Fall and Winter: 5 - 3 - 25		FR60127
Golf Green Eliminator	Liquid plant nutrient specially formulated for suppression of algae problems on turf areas. Best results when applied with the Accu-Rate spray gun	10 L	CH60106
Humic Acid	Required to increase cation exchange capacity in sand-based greens. If CEC is too low, bentgrasses cannot utilize the fertilizers in the required amounts for growth and quality. <i>Fine Granular</i>	22.7 kg	FR60185
Sea Plant Meal	Organic additive for use when airifying, verticutting or top dressing. <i>Granular</i>	25 kg	
Substral	<i>Chelated Micro Mix</i> . Dry mixture of trace elements containing iron, manganese, copper, magnesium, zinc, cobalt, boron, molybdenum and vitamin B ₁	2 kg	FR20120
Soil Conditioners			
Penetrator	Liquid plant nutrient with silicon penetrator for treating dry spots on golf greens. Best applied with the Accu-Rate spray gun.	10 L	FR60161
Soilmaster	<i>a.k.a Terra Green</i> . Inorganic mineral granules with remarkable porosity for improved drainage and reduced compaction.	22.7 kg	GM45115
Soilmaster Plus	Ceramic soil conditioner characterized by high cation exchange capacity and sound structure. Excellent for adding porosity to the soil and help maintain a loose, aerated growing environment.	22.7 kg	GM45112
Peat Moss	Course grade peat moss, ideal for sand/peat mixtures when building or repairing golf greens.	3.8 ft ³	GM15110

Chemical Fertilizers

Turf Starter: For newly seeded or sodded turf

16 - 32 - 6	50% slow release N, 5-8 wks	25 kg	FR63010
16 - 32 - 6 minis	Mini granules for golf greens	25 kg	FR63015
16 - 20 - 0	Quick release 2-4 wks	25 kg	FR63165

Golf Turf: Fairway Spring & Summer

30 - 2 - 14	Fairway formula, 40% of N from Polycoat	25 kg	FR63020
24 - 6 - 12	Super fairway, 75% of N from PCN (50%), methylene urea (25%)	25 kg	FR63030
40 - 3 - 3	Superlife fairway, 65% N from PCU	25 kg	FR63045
43 - 0 - 0	Fairway Boost, 100% N from poly-coated urea		FR63046

Landscapers, Parks and Acreages

32 - 4 - 8	40% slow release N, 4-8 wks	25 kg	FR63110
28 - 4 - 8	60% slow release N, 6-8 wks	25 kg	FR63120
18 - 18 - 18	40% slow release N, 4-8 wks	25 kg	FR63130
22 - 8 - 12	40% slow release N, 4-8 wks	25 kg	FR63140

Turf: Fall/Winterizer

6 - 0 - 36	Winterizer – High K	25 kg	FR63065
15 - 5 - 30	Fairway Winterizer blend	25 kg	FR63040

Water Soluble Fertilizers

10 - 52 - 10	Starter for new turf, shrubs and trees	17.5 kg	FR10120
20 - 20 - 20	All purpose for turf, shrubs and trees	17.5 kg	FR10200
35 - 5 - 10	High N turf blend	17.5 kg	FR61110
28 - 14 - 14	Balanced blend for turf, trees, and shrubs	17.5 kg	FR10230
3 - 11 - 27	Winterizer	17.5 kg	FR10240

Organic Fertilizer: Milorganite Professional



1 in organic fertilizers for turf, lawns, trees, and flower beds

Probably the most environmentally friendly fertilizer on the market today.

- Rich in Iron • Slow release
- Adds organic matter
- Produces rich green color
- Reduced grass clippings
- Non-leaching • Soil conditioner
- Promotes microbial activity
- Non-Burning

Guaranteed Analysis

Total Nitrogen (N)	6.0%
5.5% Water Insoluble Nitrogen	
0.5% Water Soluble Nitrogen	
Available Phosphoric Acid (P ₂ SO ₄)	2.0%
Soluble Potash (K ₂ O)	0.0%
Iron (Fe)	4.0%

Nutrients Derived From Activated Sewage Sludge

Micronutrient		Special Notes	Stock Sizes
Calcium Chelate	5.8% Ca	Very available form of Ca	2 kg
Copper Chelate	15% Cu	Use for Copper deficiency	2 kg & 20 kg
Iron Chelate	13% Fe	Drench or spray to correct chlorosis	2 kg & 25 kg
Magnesium Chelate	5.8% Mg	For magnesium deficiency	2 kg & 20 kg
Manganese Chelate	13% Mn	To correct manganese deficiency	2 kg & 20 kg
Zinc Chelate	15% Zn	For zinc deficiency in low organic soils	2 kg & 20 kg
Sodium Molybdate	39% Mo	For moly deficiency, especially in poinsettias	0.5 kg & 1 kg
Borax Decahydrate	11.34% B	Source of Boron (Use in small amounts only)	2 kg
Copper Sulphate	25% Cu	Use carefully and sparingly on plants	5 kg & 25 kg
Iron Sulphate Hepta	21% Fe	Use for acidifying soils	22.7 kg
Iron Sulphate Mono	30% Fe	Promotes dark green plants	5 kg & 22.7 kg
Magnesium Sulphate	10% Mg	Epsom Salts	25 kg
Manganese Sulphate	27% Mn	Source of Manganese	5 kg & 22.7 kg
Zinc Sulphate	36% Zn mono	Source of Zinc	5 kg & 22.7 kg

SUBSTRAL

Chelated Micronutrient/Trace Element Mix

This dry mixture can be used when no micronutrients appear in the base fertilizer. Substral includes:

Iron (Fe)	4.6%
Manganese (Mn)	2.0%
Copper (Cu)	1.4%
Magnesium (Mg)	1.0%
Zinc (Zn)	0.9%
Cobalt (Co)	0.1%
Boron (B)	0.1%
Molybdenum (Mo)	0.04%
Vitamin B ₁	0.001%

It must be dissolved in water prior to application. Use 50 grams (1.75 oz.) per 1000 litres (220 imp. gals.) of fertilizer solution for regular feeding, providing no micronutrients have been incorporated into the base fertilizer.

2 kg (4.5 lb.)	FR20120
22.7 kg (50 lb.)	FR20130

MICROMIX

Perfect for Soilless Media

This mix of micronutrients is ideal for adding to soilless media preparations prior to planting. The nutrients are derived from Ferrous Sulphate, Manganese Sulphate, Zinc Sulphate, Copper Sulphate, Sodium Borate and Sodium Molybdenate.

Sulphur (S)	15.0%
Iron (Fe)	12.0%
Manganese (Mn)	2.5%
Zinc (Zn)	1.0%
Copper (Cu)	0.5%
Boron (B)	0.01%
Molybdenum (Mo)	0.005%

Use 500 grams per 0.75 m³ (17.6 oz per yd³) of soilless growing medium.

20 kg (45 lb.)	FR20110
----------------	---------

Turf and Nursery Chemicals

IMPORTANT!
SEE PAGE 45 FOR
CHEMICAL PURCHASE
REQUIREMENTS

Chemical	Stock #	Size	Method	Notes
Fungicides				
Banner Maxx	CH60151	3.78 L	Systemic	Broad spectrum for summer and fall disease
Daconil 2787	CH60140	10 L	Contact	Broad spectrum for summer, fall and winter disease
Daconil Ultrex	CH60141	2.27 Kg	Contact	Broad spectrum for summer, fall and winter disease
Rovral Green	CH60210	10 L	Contact	Control winter diseases
Heritage Maxx	CH60164	500 gram	Systemic	Broad spectrum preventative and curative
Senator	CH60182	2 Kg	Systemic	Control of pink snow mold, pythium, dollar spot, brown patch
Primo Maxx	CH60115	3.78 L		For the Management of Clipping Yields
Aliette	CH60105	2.26 Kg	Systemic	Control of pythium diseases
Premis	CH60152	3.2 L	Contact	Control of Anthracnose and Brown Patch
Instrata	CH60149	7 L	Contact	Control of Grey and Pink Snow Molds
Insignia	CH60153	1.09 Kg		Broad spectrum herbicide
Insecticides				
Dimethoate	CH15170	4 L / 10 L	Systemic	Control of birchleaf miner, aphids, mites
Dipel	CH15210	500 gram		Biological for field vegetable crops and ornamentals
Dormant Oil	CH41115	4 L / 10 L	Contact	Mineral oils to control scale, red spider mites
Malathion	CH15270	10 L	Contact	Broad spectrum contact insecticide
Orthene	CH15300	1.5 Kg		Broad spectrum which kills by contact and systemic
Pounce	CH15120	1 L		Pyrethriod to control insects attacking seedlings
Safer's Soap	CH15361	4 L / 10 L	Contact	Low toxicity control of aphids, whiteflies, mealy bugs
Sevin T&O	CH15380	10 L		Broad-spectrum for surface and root feeding insects
Vectobac	CH40125	5 Kg		Biological control of mosquitoes and black flies
Herbicides				
Round-Up	CH25190	10 L		Non-selective for a kill of all foliage
Killex	CH65160	10 L		Controls broadleaf weeds such as dandelions, chickweed
Fiesta	CH65165	10L		Environmentally-friendly iron-based broadleaf weed control
Mecoprop	CH65170	10 L		Specifically targets legumes such as clovers in turf
Gramoxone	CH65130	5 L	Contact	Quickly and completely kills all grasses and weeds
Devrinol	CH25130	1.81 Kg	Flowable	Pre-emergent weed control in flower and shrub beds
Devrinol 10G	CH25135	50 lbs	Granular	Pre-emergent weed control in nurseries and shelterbelts
Caseron	CH25110	15 Kg		Pre-emergent weed control in nurseries and shelterbelts
Ronstar	CH25150	22.7 Kg		Weed control in container nursery stock
Rodent Control				
Skoot	CH40140	3.75 L / 20 L		Repellent discourages mice, rabbits and deer
Gopher Bombs	CH40115	4 X 203 pack		Sulphur oxide fumigant for killing gophers
Water Chemicals				
Aquashade	CH66120	3.78 L		Blue dye for colouring ponds and inhibiting algae.
Shadow E-Z Paks	CH66121	50 X 2 oz.		Colorant for ponds and fully contained bodies of water
Copper Sulphate	CH15140	25 Kg		Controls algae in ponds, lakes and sloughs
Reward	CH65200	3.8 L		Herbicide for control of aquatic weeds
Spectrum	CH66130	3.78 L		Dyes for control of filamentous algae
Miscellaneous Tank Additives				
Anti-Foam	CH17120	6 oz		Controls foaming in spray tanks
Blazon	CH68125	10 L		Tank mix turf marker dye
Green-Zit	CH68130	10 L		Green turf colorant
Tank Cleaner	CH17115	1 US qt.		Neutralizes tanks where different pesticides used

SPRAY EQUIPMENT

Super Sun Model AP-25 backpack sprayers offer convenience, flexibility and reliability. The 15L tank is made of high tensile polyethylene over a strong steel frame. The rugged piston pump can pressure up to 90 PSI with only a few strokes of the lever. The spray wand is equipped with a comfortable, quick-acting lever. The valves, gaskets and seals are Viton to prevent corrosion.



Sun Backpack Sprayer EQ46000

REPAIR PARTS AVAILABLE FOR BACKPACK SPRAYER



Spray Shields provide excellent drift protection, making sure the application goes on the target and not wasted on other crops or the applicator.



Sun AP-2 Hand Sprayer EQ46100

ACCU-RATE INJECTOR GUN

The *Accu-Rate Injector Gun* is an ideal way to treat golf greens and smaller turf areas with Penetrator wetting agents, fertilizer, micronutrients and other liquid products. Excellent for spot treatment of dry spots. Designed to apply small quantities of product at high water pressure and heavy flow rates.

Comes with hose and fitting, heavy duty on/off valve and extra refill bottles.



EQ40230

Designed for professional grounds maintenance – private, public or municipal – the *Grounds Wheelie* applies all of your liquid chemical solutions simply and effectively. Compact in size, it doesn't require cumbersome hoses or cords, and doesn't need an external power source. As you walk, you're providing the power to work the *Grounds Wheelie* system.

You set the application rate, from 800 ft² per gallon to 1200 ft² per gallon. And the application is constant no matter what the speed you are walking. The removable 6-gallon tank and ground-driven pump system are made of corrosion resistant material, so it is made to last.

The WS-480 Model is equipped with 2 pumps, 2 nozzles, 2 fold-up booms and shut-off valve. It will deliver a 72" fan of solution.

GROUND'S WHEELIE



Grounds Wheelie WS480	EQ70130
Spray Tank for 6 gallon	EQ70151
PW17 Rubber Pump	EQ70152
<i>Replacement Parts Available</i>	